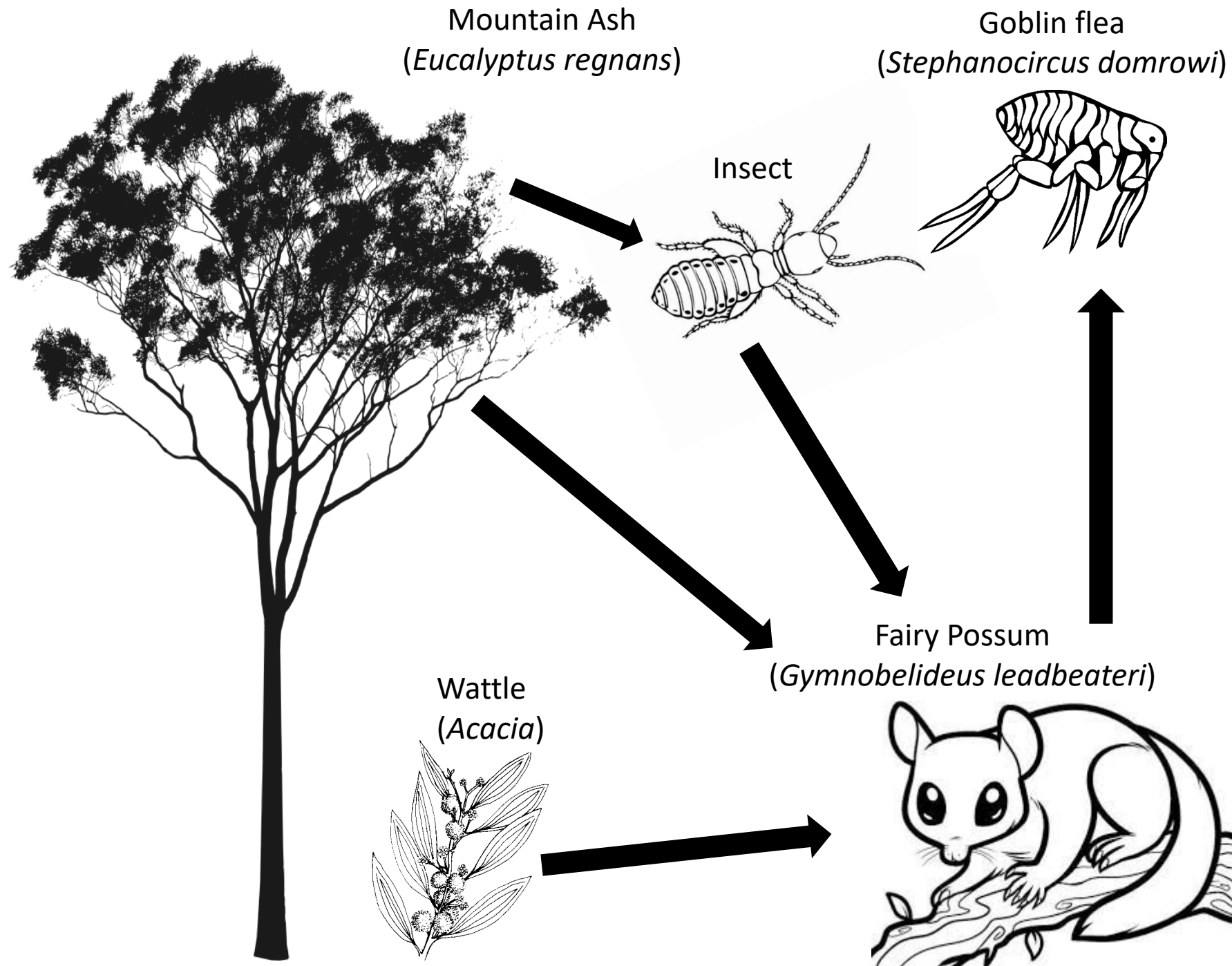


Objective

The Goblin Flea and Fairy Possum are dependent on forests for their survival. Forests provide shelter and food for the Fairy Possum, which in turn provides the same for the Goblin Flea.

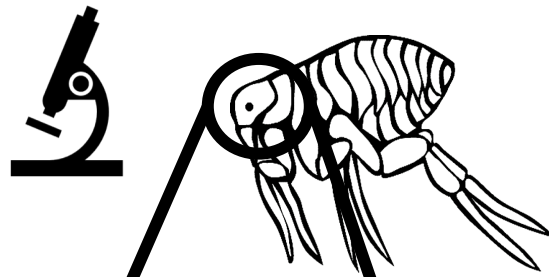
1. In the food web, put a cross through a plant or animal. Follow the arrows to see what effects its disappearance will have on the other species in the forest.
2. What happens to the Goblin Flea if the Fairy Possum disappears?
3. What happens to the rest of the forest if the Mountain Ash disappears?



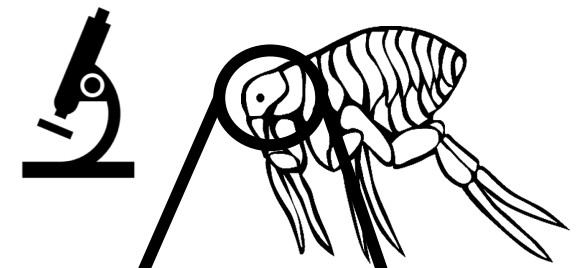
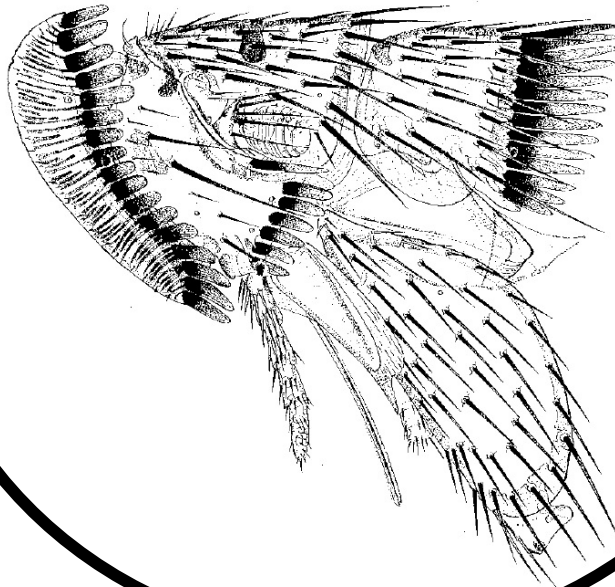
Objective

You are a scientist studying the Goblin Flea. You need to find some features to help other scientists tell it apart from its relative, the Common Helmeted Flea.

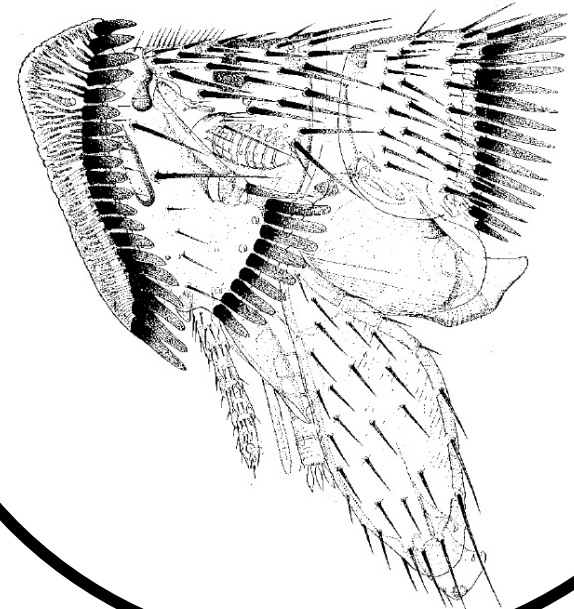
Look at the heads of both flea species and use your pencil to circle differences you see that could be used to tell the two species apart.



Common Helmeted Flea
(*Stephanocircus pectinipes*)



Goblin Flea
(*Stephanocircus domrowi*)

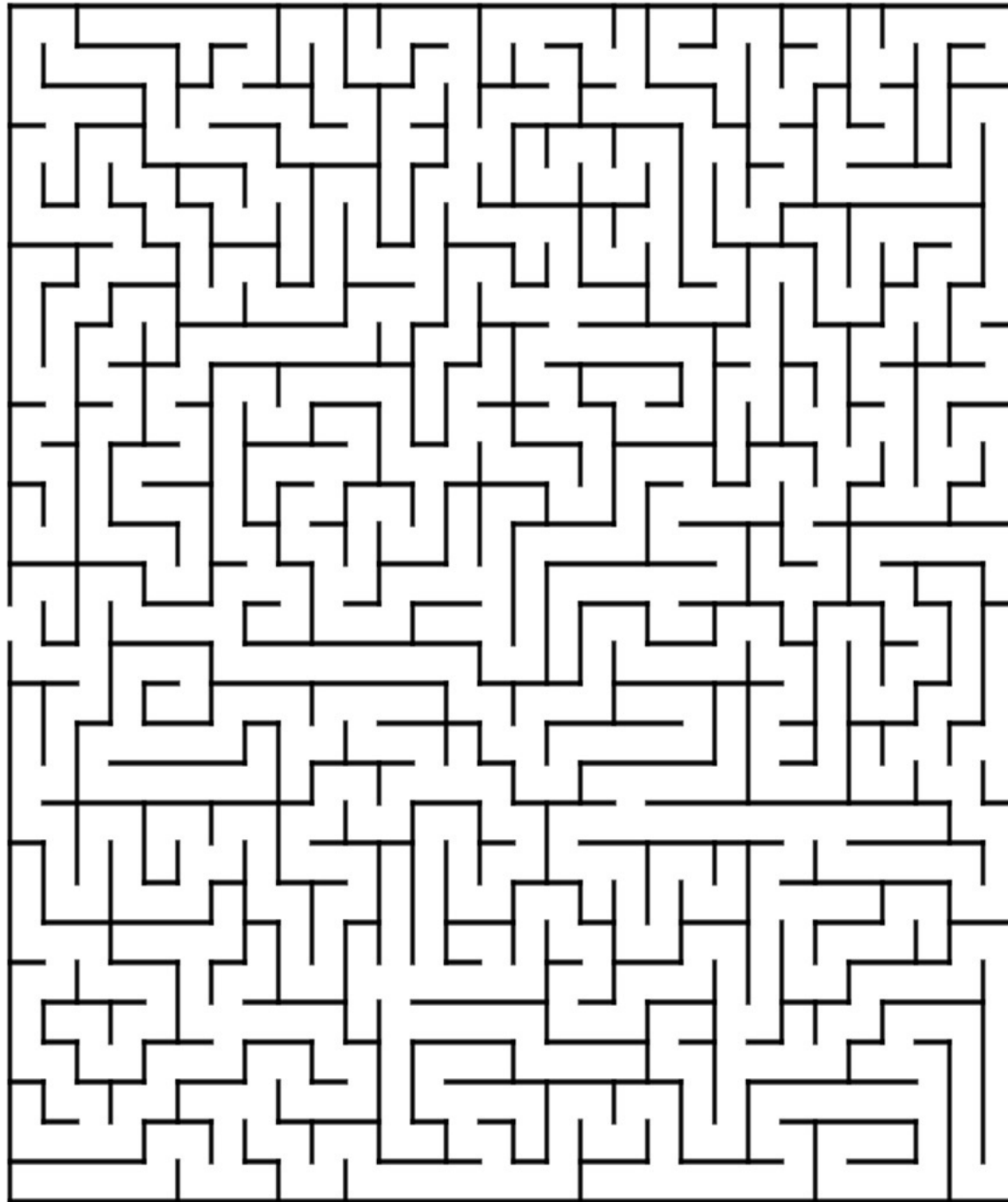
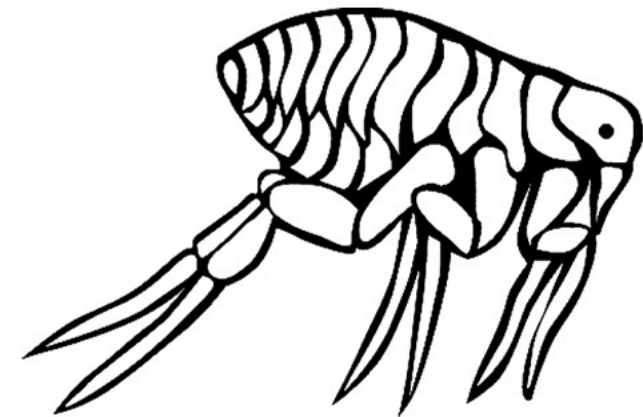


Objective

Help the endangered Goblin Flea find its host, the Fairy Possum.

Without the Fairy Possum, the Goblin Flea will go extinct!

(If you have time, colour in the Fairy Possum and Goblin Flea)



Fun Facts

1. The Goblin Flea is one of the world's rarest insects.
2. The Goblin Flea is small enough to stand on the tip of your pencil!
3. The Goblin Flea and Fairy Possum can only be found in a few forests in Victoria, Australia.

